

CD-SPECTROSCOPE

Look here! →

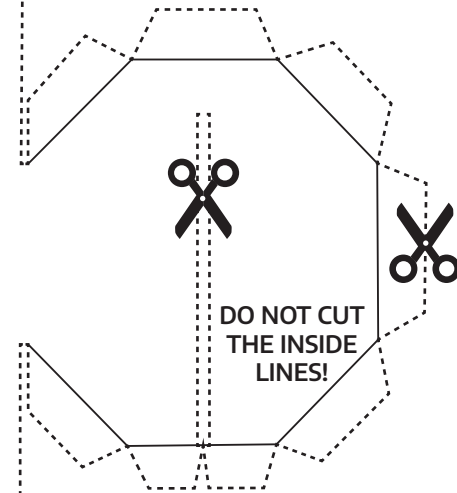
Point this end **directly** at a light source →

DO NOT CUT THIS LINE!

Roll the other side up to here to make the spectroscopy tube.

Instructions

1. Cut all the dotted lines.
2. Gently poke a pencil through the paper for the eye-hole.
3. Roll the spectroscopy into a tube shape and tape it closed.



4. Fold the tabs on the disk and tape them down to form a lid.
5. Place a CD in the slits, point the lid slit towards light and look through the eye-hole.